



Planning Our Future!

Join us for a **FREE** afternoon planning session on the future directions of the Greater Sydney Landcare Network—your network!

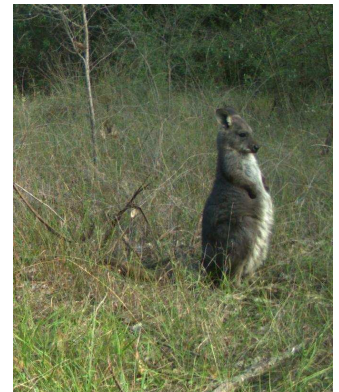
Apps, Conservation and Social Networks

The Greater Sydney Landcare Network (GSLN) is planning its future and looking at its progress. We want your input.

It's an exciting time, when bushcare activities of volunteers across the Sydney region, can be mapped and reported to a Network that includes decision makers and managers.

We have a great location and Spring will be on show.

Field of Mars Study Centre, Sunday August 23rd August 2015



1.30pm Registration and refreshments

2pm Welcome

2.10-2.30 pm Speed Talks – Your network update

- *Judy Christie — Chair's Report – what we have achieved so far*
- *Paul Vale - Lessons Learned - Blue Mountains Bushcare Network*
- *Vanessa Keyzer - Adventure Conservation and Source to Sea*
- *Jeff Cottrell – Developing an App for day to day collection of bushcare / landcare data*

2.30-3.10pm Planning Our Future Session

3.10-3.30pm AGM & Adoption of Constitution

3.30 Wildflower Walk in Field of Mars



RSVP to secretary@greatersydneylandcare.org

For more information visit www.greatersydneylandcare.org

Find the Field of Mars Study Centre

VEHICLE ACCESS Field of Mars Reserve

Field of Mars Reserve is on Pittwater Road, East Ryde. The nearest cross street is High Street (Boronia Park) or Rene Street (East Ryde).

